

2 Heritage Close

LOT
25

MOVE IN
Lease Back

MODEL
Bradbury

SIZE
2,773 sq ft.

SHOWHOME

Features

- + Full-height kitchen cabinetry with straight riser to ceiling
- + Laundry room cabinetry with storage
- + EV charger rough-in
- + 9' main floor ceilings with 8' interior doors
- + 10mm ensuite shower glass
- + Custom MDF built-ins throughout

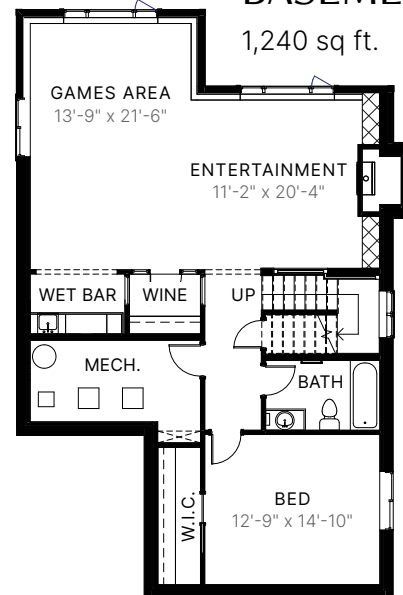
Upgrades

- + Partial Sunshine Basement
- + Pantry cabinet package with quartz countertop
- + Oak railing with iron spindles on stairs to the upper floor
- + Matte Black lighting package
- + 46" gas fireplace in Great Room
- + Custom fireplace surround
- + Tile upgrades throughout by *Bryant Design*



BASEMENT

1,240 sq ft.



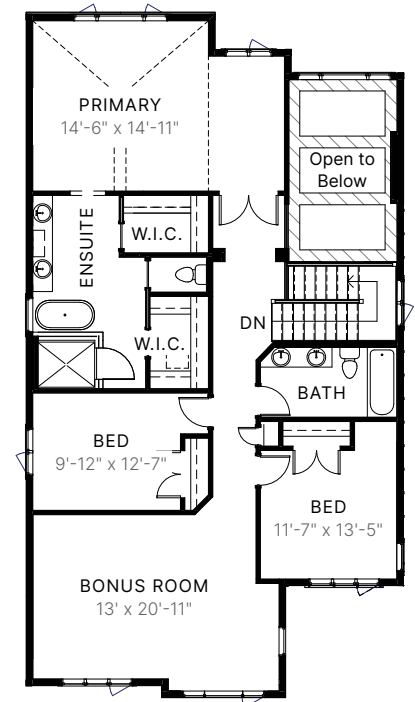
MAIN LEVEL

1,320 sq ft.



UPPER LEVEL

1,462 sq ft.



FIFTH | **AVE**
HOMES

The builder reserves the right to modify or change plans, specifications, features and prices without notice. Materials may be substituted with equivalent or better at the builder's sole discretion. All dimensions and sizes are approximate and are based on architectural measurements. As reverse, mirrored and/or flipped plans occur throughout the building, please see architectural plans if material to your decision to purchase. Renderings, furnishings and equipment shown are an artist's conception and are intended as a general reference only. Please see disclosure statement for specific offering details. E. & O.E.