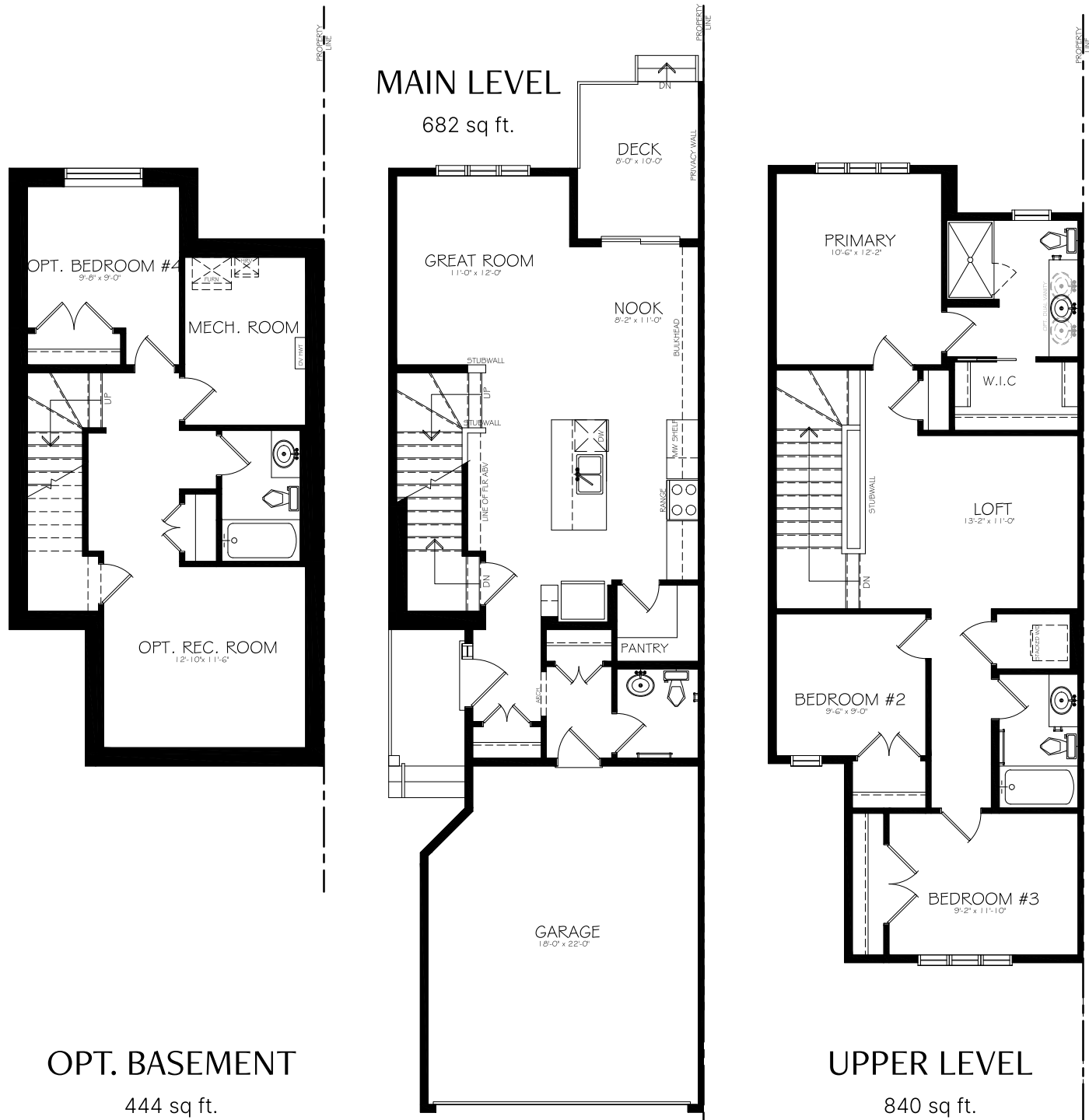


# EMERSON

1,522 sq ft. // 3 bed // 2.5 bath

DUPLEX



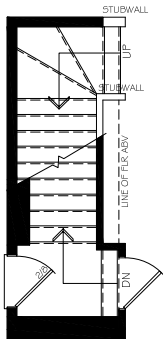
**FIFTH** | AVE  
**HOMES**

The builder reserves the right to modify or change plans, specifications, features and prices without notice. Materials may be substituted with equivalent or better at the builder's sole discretion. All dimensions and sizes are approximate and are based on architectural measurements. As reverse, mirrored and/or flipped plans occur throughout the building, please see architectural plans if material to your decision to purchase. Renderings, furnishings and equipment shown are an artist's conception and are intended as a general reference only. Please see disclosure statement for specific offering details. E. & O.E.

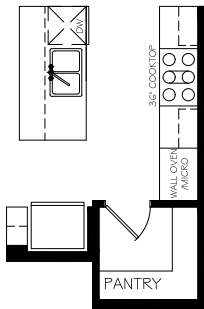
# EMERSON

1,522 sq ft. // 3 bed // 2.5 bath

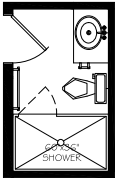
DUPLEX



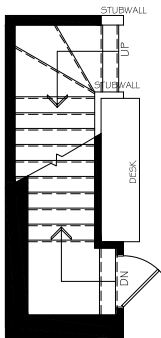
Optional  
Side Entry



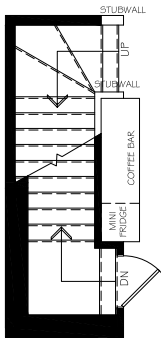
Optional  
Gourmet Kitchen



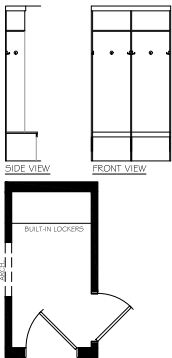
Optional  
Main Bath Shower



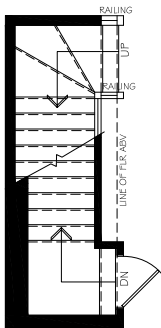
Optional Built-In  
Desk



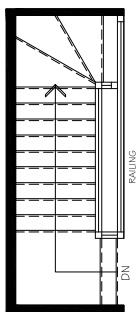
Optional Built-In  
Coffee/Wine Bar



Optional  
Mudroom Locker



MAIN LEVEL



UPPER LEVEL

Optional Railing

FIFTH|AVE  
HOMES

The builder reserves the right to modify or change plans, specifications, features and prices without notice. Materials may be substituted with equivalent or better at the builder's sole discretion. All dimensions and sizes are approximate and are based on architectural measurements. As reverse, mirrored and/or flipped plans occur throughout the building, please see architectural plans if material to your decision to purchase. Renderings, furnishings and equipment shown are an artist's conception and are intended as a general reference only. Please see disclosure statement for specific offering details. E. & O.E.